

Multiports

M4-SR12

Media Type
Hydraulic Oil, Air - Vacuum

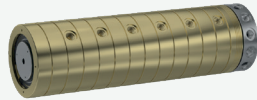
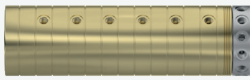
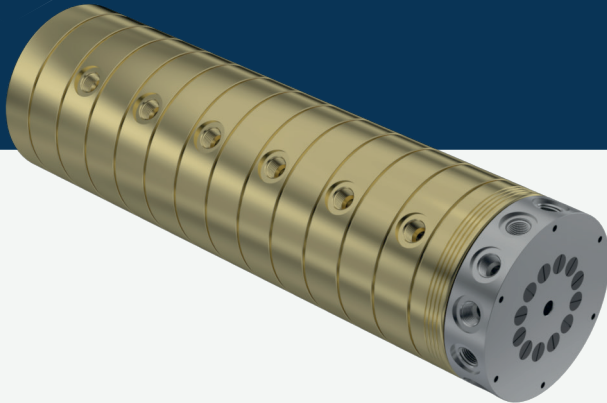
Max. Speed
250 RPM

Max. Pressure
250 BAR

Max. Temperature
80 °C

Connection Type
NPT, BSPP, BSPT

Rotor Size
2 x 1/4" - 12 x 3/4"

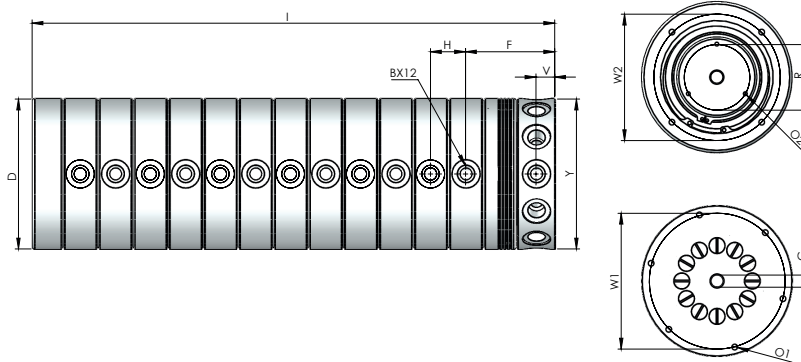


- ✓ Multi flow design
- ✓ Self supported design
- ✓ Dynamic carbon teflon sealing
- ✓ Special design sealing part for different fluids
- ✓ BSP,NPT metric threads inlet's & outlet's
- ✓ Chrom plated sealing surface
- ✓ Brass body
- ✓ Custom connections types are available

Multi-passage rotary unions.

! Do not operate without fluid.

DIMENSIONS



| SIZE | MODEL NO | B | YØ | B2 | DØ | F | H | I | V | GØ | W1Ø | W2Ø | RØ | O1 | O2 | KG |
|-----------|---------------|-----------|-----|-----------|-----|-------|-------|--------|-------|----|-----|-----|----|-------|-------|-------|
| 12 X 1/4" | M4-412081-200 | 1/4" NPT | 130 | 1/4" NPT | 130 | 77,55 | 25,40 | 403,60 | 12,50 | 7 | 115 | 115 | 45 | M6X20 | M4X20 | 38,15 |
| 12 X 1/4" | M4-412082-200 | 1/4" BSP | 130 | 1/4" BSP | 130 | 77,55 | 25,40 | 403,60 | 12,50 | 7 | 115 | 115 | 45 | M6X20 | M4X20 | 38,15 |
| 12 X 1/4" | M4-412083-200 | 1/4" BSPP | 130 | 1/4" BSPP | 130 | 77,55 | 25,40 | 403,60 | 12,50 | 7 | 115 | 115 | 45 | M6X20 | M4X20 | 38,15 |
| 12 X 3/8" | M4-412101-200 | 3/8" NPT | 150 | 3/8" NPT | 150 | 72,70 | 30 | 460,50 | 15 | 10 | 135 | 135 | 50 | M6X20 | M3X10 | 59,75 |
| 12 X 3/8" | M4-412102-200 | 3/8" BSP | 150 | 3/8" BSP | 150 | 72,70 | 30 | 460,50 | 15 | 10 | 135 | 135 | 50 | M6X20 | M3X10 | 59,75 |
| 12 X 3/8" | M4-412103-200 | 3/8" BSPP | 150 | 3/8" BSPP | 150 | 72,70 | 30 | 460,50 | 15 | 10 | 135 | 135 | 50 | M6X20 | M3X10 | 59,75 |
| 12 X 1/2" | M4-412151-200 | 1/2" NPT | 160 | 1/2" NPT | 160 | 95,2 | 37,4 | 558 | 20 | 13 | 145 | 135 | 70 | M6X20 | M4X10 | 80,45 |
| 12 X 1/2" | M4-412152-200 | 1/2" BSP | 160 | 1/2" BSP | 160 | 95,2 | 37,4 | 558 | 20 | 13 | 145 | 135 | 70 | M6X20 | M4X10 | 80,45 |
| 12 X 1/2" | M4-412153-200 | 1/2" BSPP | 160 | 1/2" BSPP | 160 | 95,2 | 37,4 | 558 | 20 | 13 | 145 | 135 | 70 | M6X20 | M4X10 | 80,45 |