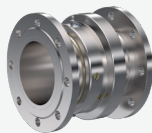
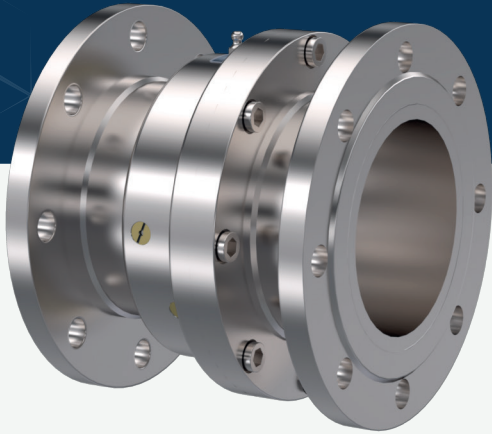


Swivel Joint B Series



Swivel Joint for water, hydraulic oil and chemical fluids, with carbon steel material, flanged.

Media Type
**Hydraulic Oil,
Water + General Purpose**

Max. Pressure
250 BAR

Connection Type
FL

Max. Speed
20 RPM

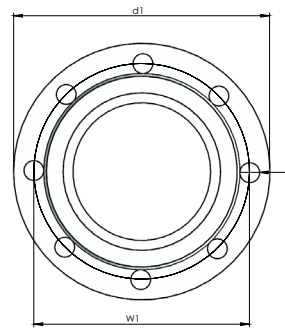
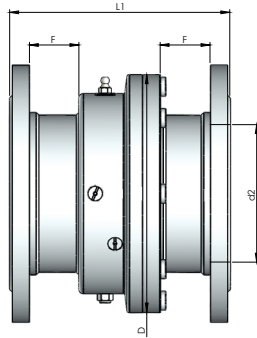
Max. Temperature
120 °C

Rotor Size
1/2" DN15 - 10" DN250

- ✓ Single flow design, vertical rotation
- ✓ Stainless steel material
- ✓ Hardened inner sealing surface
- ✓ Special design sealing components
- ✓ Easy changable repair parts
- ✓ All flange types are aviable DIN, ANSI etc..

! Do not operate without fluid.

DIMENSIONS



SIZE	MODEL NO	DØ	L1	d1Ø	d2Ø	F	W1Ø	OØ	KG
65	BF10T165 - 304	146	185,50	185	70,30	40,50	145	18 X 4	12,15
65	BF16T165 - 304	146	185,50	185	70,30	40,50	145	18 X 4	12,15
65	BF40T165 - 304	146	193,50	185	70,30	40,50	145	18 X 8	13,25
80	BF10T180 - 304	162	197,50	200	78	43,50	160	18 X 8	14,30
80	BF16T180 - 304	162	197,50	200	78	43,50	160	18 X 8	14,30
80	BF40T180 - 304	162	205,50	200	78	43,50	160	18 X 8	16,70
100	BF10T1110 - 304	187	205	220	107,10	46,50	180	18 X 8	17,85
100	BF16T1110 - 304	187	205	220	107,10	46,50	180	18 X 8	17,85
100	BF40T1110 - 304	187	213	220	107,10	46,20	180	18 X 8	21,10
125	BF16T1125 - 304	224	227,50	250	131,70	50,50	210	18 X 8	25,60
125	BF40T1125 - 304	224	235,50	270	131,70	50,50	220	18 X 8	30,50
150	BF16T1150 - 304	264	245	285	153	50,50	240	22 X 8	37,80

150	BF40T1150 - 304	264	257	300	153	50,50	250	26 X 8	45,05
200	BF16T1200 - 304	334	282,50	340	207,30	60,50	295	22 X 12	60,45