

Swivel Joint

E1-KKS1 Series



Swivel Joint for water, hydraulic oil, gress and chemical fluids.

Media Type
**Hydraulic Oil,
Water + General Purpose**

Max. Pressure
250 BAR

Connection Type
Weld End

Max. Speed
20 RPM

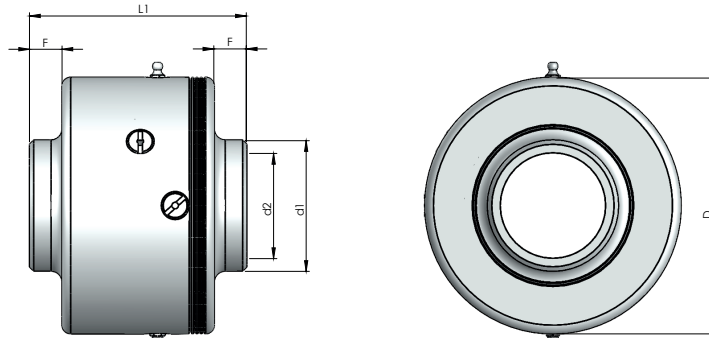
Max. Temperature
120 °C

Rotor Size
3/4" DN20 - 8" DN200

- ✓ Single flow design
- ✓ Stainless steel body
- ✓ Hardened inner sealing surface
- ✓ Special design sealing components
- ✓ Easy changable repair parts
- ✓ Weld end connection

 Do not operate without fluid.

DIMENSIONS



| SIZE | MODEL NO | DØ | L1 | d1Ø | d2Ø | F | KG |
|------|------------------|-----|-----|--------|--------|-------|-------|
| 20 | E1 - KK1-020-304 | 72 | 75 | 26,90 | 21,10 | 13 | 1,46 |
| 25 | E1 - KK1-025-304 | 78 | 76 | 33,70 | 27,30 | 13 | 1,80 |
| 32 | E1 - KK1-032-304 | 88 | 105 | 42,40 | 35,20 | 15 | 3,20 |
| 40 | E1 - KK1-040-304 | 100 | 105 | 48,30 | 36,90 | 15 | 4,10 |
| 50 | E1 - KK1-050-304 | 118 | 100 | 60,30 | 48,50 | 15 | 5,15 |
| 65 | E1 - KK1-065-304 | 133 | 110 | 76,10 | 59 | 17,50 | 6,95 |
| 80 | E1 - KK1-080-304 | 139 | 111 | 88,90 | 76,30 | 17,50 | 6,58 |
| 100 | E1 - KK1-100-304 | 175 | 110 | 114,30 | 97,10 | 17,50 | 10,35 |
| 125 | E1 - KK1-125-304 | 199 | 140 | 139,70 | 122,30 | 20 | 15,94 |
| 150 | E1 - KK1-150-304 | 222 | 145 | 168,30 | 150 | 22,50 | 17,72 |
| 200 | E1 - KK1-200-304 | 288 | 180 | 219,10 | 200 | 25 | 32,76 |