

# Multiports M4-S10

Media Type  
**Hydraulic Oil, Air - Vacuum**

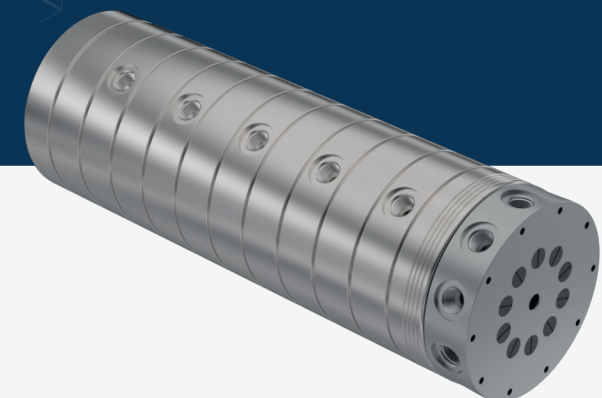
Max. Speed  
**250 RPM**

Max. Pressure  
**250 BAR**

Max. Temperature  
**80 °C**

Connection Type  
**NPT, BSPP, BSPT**

Rotor Size  
**2 x 1/4" - 12 x 3/4"**

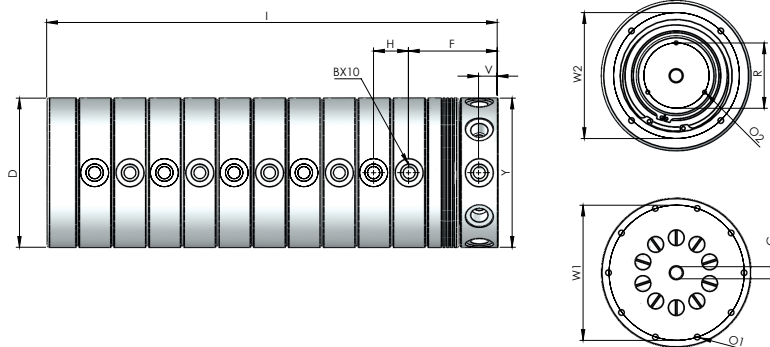


- ✓ Multi flow design
- ✓ Self supported design
- ✓ Dynamic carbon teflon sealing
- ✓ Special design sealing part for different fluids
- ✓ BSP,NPT metric threads inlet's & outlet's
- ✓ Chrom plated sealing surface
- ✓ Stainless Steel body
- ✓ Custom connections types are available

Multi-passageway rotary unions.

**!** Do not operate without fluid.

## DIMENSIONS



SIZE	MODEL NO	B	YØ	B2	DØ	F	H	I	V	GØ	W1Ø	W2Ø	RØ	O1	O2	KG
10 X 1/4"	M4-210081-200	1/4" NPT	130	1/4" NPT	130	77,55	25,40	353,40	12,50	7	115	115	45	M6X20	M4X20	32,30
10 X 1/4"	M4-210082-200	1/4" BSP	130	1/4" BSP	130	77,55	25,40	353,40	12,50	7	115	115	45	M6X20	M4X20	32,30
10 X 1/4"	M4-210083-200	1/4" BSPP	130	1/4" BSPP	130	77,55	25,40	353,40	12,50	7	115	115	45	M6X20	M4X20	32,30
10 X 3/8"	M4-210101-200	3/8" NPT	150	3/8" NPT	150	72,70	30	400,50	15	10	135	135	50	M6X20	M3X10	50,70
10 X 3/8"	M4-210102-200	3/8" BSP	150	3/8" BSP	150	72,70	30	400,50	15	10	135	135	50	M6X20	M3X10	50,70
10 X 3/8"	M4-210103-200	3/8" BSPP	150	3/8" BSPP	150	72,70	30	400,50	15	10	135	135	50	M6X20	M3X10	50,70
10 X 1/2"	M4-210151-200	1/2" NPT	160	1/2" NPT	160	95,20	37,40	483,15	20	13	145	135	70	M6X20	M4X10	68,30
10 X 1/2"	M4-210152-200	1/2" BSP	160	1/2" BSP	160	95,20	37,40	483,15	20	13	145	135	70	M6X20	M4X10	68,30
10 X 1/2"	M4-210153-200	1/2" BSPP	160	1/2" BSPP	160	95,20	37,40	483,15	20	13	145	135	70	M6X20	M4X10	68,30
10 X 3/4"	M4-210201-200	3/4" NPT	180	3/4" NPT	220	105,35	43,40	555,80	20	18	200	200	70	M8X20	M4X10	148,50
10 X 3/4"	M4-210202-200	3/4" BSP	180	3/4" BSP	220	105,35	43,40	555,80	20	18	200	200	70	M8X20	M4X10	148,50
10 X 3/4"	M4-210203-200	3/4" BSPP	180	3/4" BSPP	220	105,35	43,40	555,80	20	18	200	200	70	M8X20	M4X10	148,50