

# Multiports M3-S2

Media Type  
**Hydraulic Oil, Air - Vacuum**

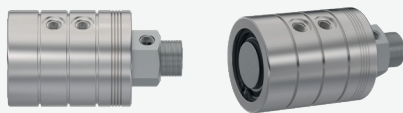
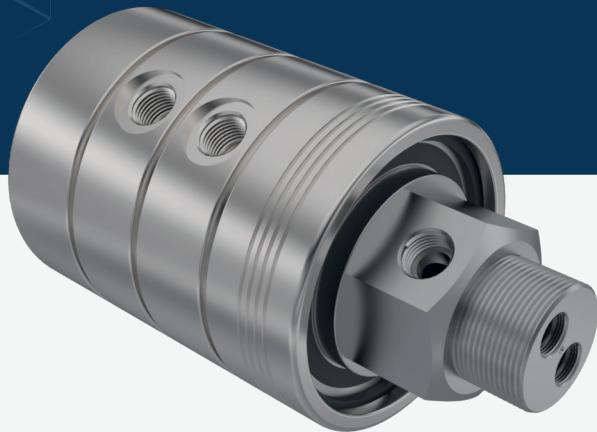
Max. Speed  
**250 RPM**

Max. Pressure  
**250 BAR**

Max. Temperature  
**80 °C**

Connection Type  
**NPT, BSPP, BSPT**

Rotor Size  
**2 x 1/4" - 12 x 3/4"**

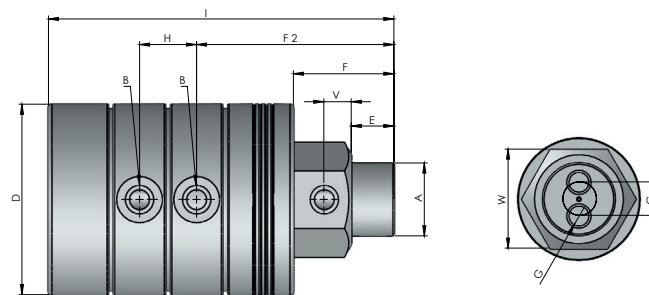


Multi-passage rotary unions.

- ✓ Threaded connection
- ✓ Self supported design
- ✓ Dynamic carbon teflon sealing
- ✓ Special design sealing part for different fluids
- ✓ Chrom plated sealing surface
- ✓ Stainless steel body
- ✓ Custom connections types are available

**!** Do not operate without fluid.

## DIMENSIONS



SIZE	MODEL NO	B	A (RH)	GØ	E	F	DØ	I	F 2	H	V	GWØ	W	KG
2 X 1/4"	M3-32081-2110	1/4" NPT	1" NPT	7	19	57	80	162,50	98	23,4	17	15	46	2,50
2 X 1/4"	M3-32082-2210	1/4" BSP	1" BSP	7	19	57	80	162,50	98	23,4	17	15	46	2,50
2 X 1/4"	M3-32083-2310	1/4" BSPP	1" BSPP	7	19	57	80	162,50	98	23,4	17	15	46	2,50
2 X 1/4"	M3-32081-2112	1/4" NPT	1 1/4" NPT	7	28	66	80	171,50	107	23,4	17	20	55	3
2 X 1/4"	M3-32082-2212	1/4" BSP	1 1/4" BSP	7	28	66	80	171,50	107	23,4	17	20	55	3
2 X 1/4"	M3-32083-2312	1/4" BSPP	1 1/4" BSPP	7	28	66	80	171,50	107	23,4	17	20	55	3
2 X 3/8"	M3-32101-2112	3/8" NPT	1 1/4" NPT	10	28	66	80	190	113	30	17	18	55	3,20
2 X 3/8"	M3-32102-2212	3/8" BSP	1 1/4" BSP	10	28	66	80	190	113	30	17	18	55	3,20
2 X 3/8"	M3-32103-2312	3/8" BSPP	1 1/4" BSPP	10	28	66	80	190	113	30	17	18	55	3,20
2 X 1/2"	M3-32151-2114	1/2" NPT	1 1/2" NPT	13	28	66	125	226,80	129,50	37,40	18	22	65	9,65
2 X 1/2"	M3-32152-2214	1/2" BSP	1 1/2" BSP	13	28	66	125	226,80	129,50	37,40	18	22	65	9,65
2 X 1/2"	M3-32153-2314	1/2" BSPP	1 1/2" BSPP	13	28	66	125	226,80	129,50	37,40	18	22	65	9,65
2 X 3/4"	M3-32201-2116	3/4" NPT	2" NPT	18	30	90	135	261,80	155,50	43,40	25	27	70	12,40
2 X 3/4"	M3-32202-2216	3/4" BSP	2" BSP	18	30	90	135	261,80	155,50	43,40	25	27	70	12,40
2 X 3/4"	M3-32203-2316	3/4" BSPP	2" BSPP	18	30	90	135	261,80	155,50	43,40	25	27	70	12,40