

Multiports M5-A16

Media Type
Air - Vacuum

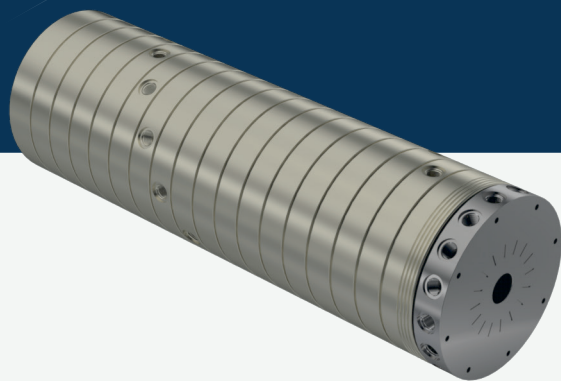
Max. Speed
250 RPM

Max. Pressure
10 BAR

Max. Temperature
80 °C

Connection Type
NPT, BSPP, BSPT

Rotor Size
2 x 1/4" - 16 x 3/8"

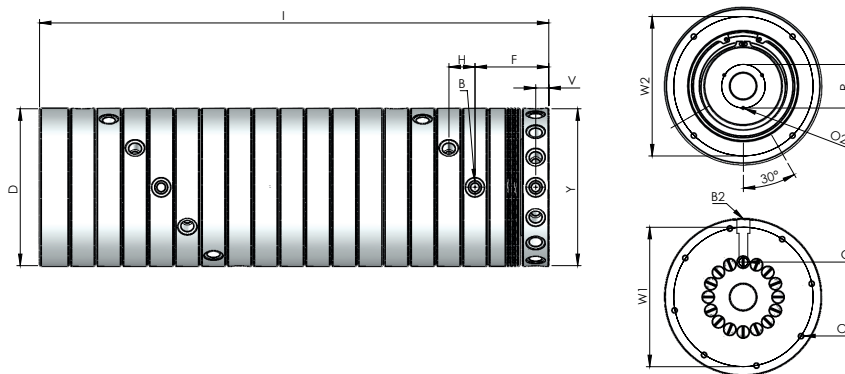


- ✓ Multi flow design
- ✓ Self supported design
- ✓ Dynamic carbon teflon sealing
- ✓ Special design sealing part for different fluids
- ✓ BSP, NPT metric threads inlet's & outlet's
- ✓ Chrom plated sealing surface
- ✓ Aluminium body
- ✓ Custom connections types are available

Multi-passage rotary unions.

! Do not operate without fluid.

DIMENSIONS



SIZE (DN)	MODEL NO	B	YØ	B2	DØ	F	H	I	V	GØ	W1Ø	W2Ø	RØ	O1	O2	KG
16 X 1/4"	M5-316081-200	1/4" NPT	130	1/4" NPT	130	77,50	25,40	505,50	12,50	7	115	115	45	M6X20	M4X20	28,50
16 X 1/4"	M5-316082-200	1/4" BSP	130	1/4" BSP	130	77,50	25,40	505,50	12,50	7	115	115	45	M6X20	M4X20	28,50
16 X 1/4"	M5-316083-200	1/4" BSPP	130	1/4" BSPP	130	77,50	25,40	505,50	12,50	7	115	115	45	M6X20	M4X20	28,50
16 X 3/8"	M5-316101-200	3/8" NPT	180	3/8" NPT	180	84,70	30	585	15	10	180	180	50	M6X20	M4X20	59,65
16 X 3/8"	M5-316102-200	3/8" BSP	180	3/8" BSP	180	84,70	30	585	15	10	180	180	50	M6X20	M4X20	59,65
16 X 3/8"	M5-316103-200	3/8" BSPP	180	3/8" BSPP	180	84,70	30	585	15	10	180	180	50	M6X20	M4X20	59,65