

# Multiports M3-C2

Media Type  
**Hydraulic Oil, Air - Vacuum**

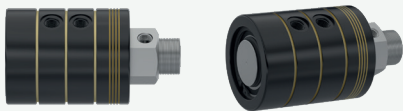
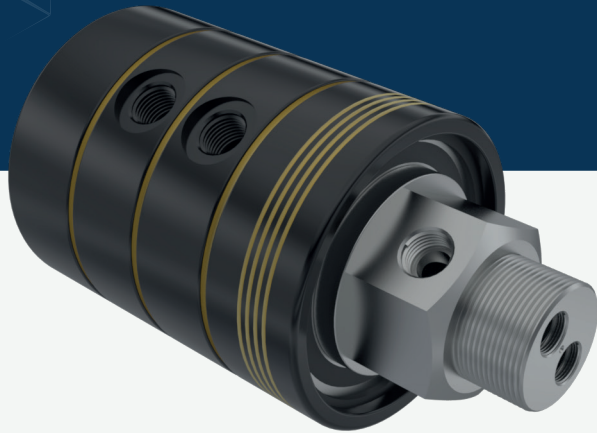
Max. Speed  
**250 RPM**

Max. Pressure  
**250 BAR**

Max. Temperature  
**80 °C**

Connection Type  
**NPT, BSPP, BSPT**

Rotor Size  
**2 x 1/4" - 12 x 3/4"**

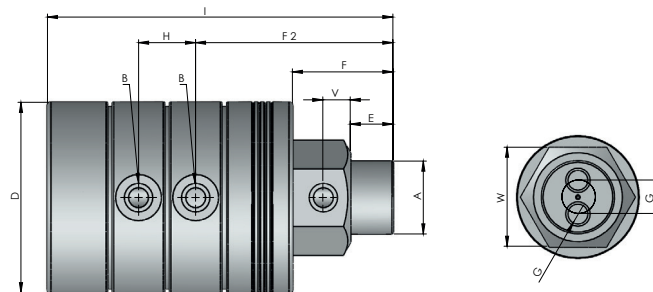


- ✓ Threaded connection
- ✓ Self supported design
- ✓ Dynamic carbon teflon sealing
- ✓ Special design sealing part for different fluids
- ✓ Chrom plated sealing surface
- ✓ Carbon steel body
- ✓ Custom connections types are available

Multi-pass rotary unions.

**!** Do not operate without fluid.

## DIMENSIONS



SIZE	MODEL NO	B	A (RH)	GØ	E	F	DØ	I	F 2	H	V	GWØ	W	KG
2 X 1/4"	M3-12081-2110	1/4" NPT	1" NPT	7	19	57	80	162,50	98	23,40	17	15	46	3,90
2 X 1/4"	M3-12082-2210	1/4" BSP	1" BSP	7	19	57	80	162,50	98	23,40	17	15	46	3,90
2 X 1/4"	M3-12083-2310	1/4" BSPP	1" BSPP	7	19	57	80	162,50	98	23,40	17	15	46	3,90
2 X 1/4"	M3-12081-2112	1/4" NPT	1 1/4" NPT	7	28	66	80	171,50	107	23,40	17	20	55	4,55
2 X 1/4"	M3-12082-2212	1/4" BSP	1 1/4" BSP	7	28	66	80	171,50	107	23,40	17	20	55	4,55
2 X 1/4"	M3-12083-2312	1/4" BSPP	1 1/4" BSPP	7	28	66	80	171,50	107	23,40	17	20	55	4,55
2 X 3/8"	M3-12101-2112	3/8" NPT	1 1/4" NPT	10	28	66	80	190	113	30	17	18	55	5,15
2 X 3/8"	M3-12102-2212	3/8" BSP	1 1/4" BSP	10	28	66	80	190	113	30	17	18	55	5,15
2 X 3/8"	M3-12103-2312	3/8" BSPP	1 1/4" BSPP	10	28	66	80	190	113	30	17	18	55	5,15
2 X 1/2"	M3-12151-2114	1/2" NPT	1 1/2" NPT	13	28	66	125	226,80	129,50	37,40	18	22	65	14,95
2 X 1/2"	M3-12152-2214	1/2" BSP	1 1/2" BSP	13	28	66	125	226,80	129,50	37,40	18	22	65	14,95
2 X 1/2"	M3-12153-2314	1/2" BSPP	1 1/2" BSPP	13	28	66	125	226,80	129,50	37,40	18	22	65	14,95
2 X 3/4"	M3-12201-2116	3/4" NPT	2" NPT	18	30	90	135	261,80	155,50	43,40	25	27	70	18,90
2 X 3/4"	M3-12202-2216	3/4" BSP	2" BSP	18	30	90	135	261,80	155,50	43,40	25	27	70	18,90
2 X 3/4"	M3-12203-2316	3/4" BSPP	2" BSPP	18	30	90	135	261,80	155,50	43,40	25	27	70	18,90