

Multiports

M4-C10

Media Type
Hydraulic Oil, Air - Vacuum

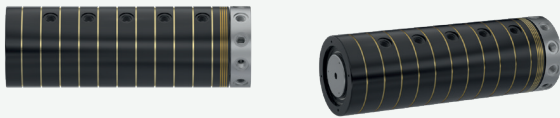
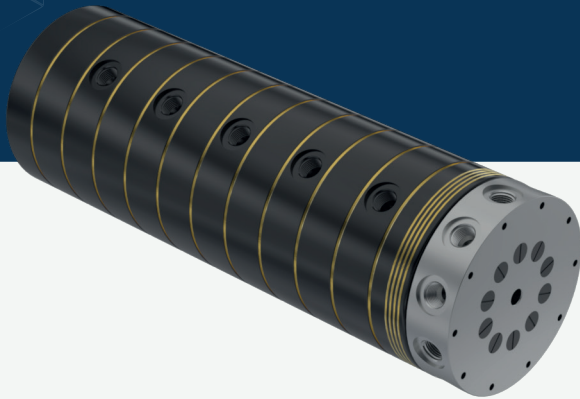
Max. Speed
250 RPM

Max. Pressure
250 BAR

Max. Temperature
80 °C

Connection Type
NPT, BSPP, BSPT

Rotor Size
2 x 1/4" - 12 x 3/4"

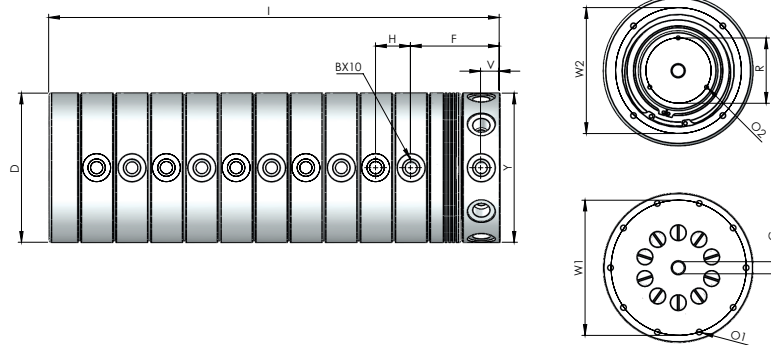


- ✓ Multi flow design
- ✓ Self supported design
- ✓ Dynamic carbon teflon sealing
- ✓ Special design sealing part for different fluids
- ✓ BSP,NPT metric threads inlet's & outlet's
- ✓ Chrom plated sealing surface
- ✓ Carbon Steel body
- ✓ Custom connections types are available

Multi-passageway rotary unions.

! Do not operate without fluid.

DIMENSIONS



SIZE	MODEL NO	B	YØ	B2	DØ	F	H	I	V	GØ	W1Ø	W2Ø	RØ	O1	O2	KG
10 X 1/4"	M4-110081-200	1/4" NPT	130	1/4" NPT	130	77,55	25,40	353,40	12,50	7	115	115	45	M6X20	M4X20	31,50
10 X 1/4"	M4-110082-200	1/4" BSP	130	1/4" BSP	130	77,55	25,40	353,40	12,50	7	115	115	45	M6X20	M4X20	31,50
10 X 1/4"	M4-110083-200	1/4" BSPP	130	1/4" BSPP	130	77,55	25,40	353,40	12,50	7	115	115	45	M6X20	M4X20	31,50
10 X 3/8"	M4-110101-200	3/8" NPT	150	3/8" NPT	150	72,70	30	400,50	15	10	135	135	50	M6X20	M3X10	49,50
10 X 3/8"	M4-110102-200	3/8" BSP	150	3/8" BSP	150	72,70	30	400,50	15	10	135	135	50	M6X20	M3X10	49,50
10 X 3/8"	M4-110103-200	3/8" BSPP	150	3/8" BSPP	150	72,70	30	400,50	15	10	135	135	50	M6X20	M3X10	49,50
10 X 1/2"	M4-110151-200	1/2" NPT	160	1/2" NPT	160	95,20	37,40	483,15	20	13	145	135	70	M6X20	M4X10	68,30
10 X 1/2"	M4-110152-200	1/2" BSP	160	1/2" BSP	160	95,20	37,40	483,15	20	13	145	135	70	M6X20	M4X10	68,30
10 X 1/2"	M4-110153-200	1/2" BSPP	160	1/2" BSPP	160	95,20	37,40	483,15	20	13	145	135	70	M6X20	M4X10	68,30
10 X 3/4"	M4-110201-200	3/4" NPT	180	3/4" NPT	220	105,35	43,40	555,80	20	18	200	200	70	M8X20	M4X10	144,45
10 X 3/4"	M4-110202-200	3/4" BSP	180	3/4" BSP	220	105,35	43,40	555,80	20	18	200	200	70	M8X20	M4X10	144,45
10 X 3/4"	M4-110203-200	3/4" BSPP	180	3/4" BSPP	220	105,35	43,40	555,80	20	18	200	200	70	M8X20	M4X10	144,45

10 X 1"	M4-110251-200	1" NPT	250	1" NPT	250	130,35	50,40	654,30	25	22	260	260	100	M12X50	M10X20	299,30
10 X 1"	M4-110252-200	1" BSP	250	1" BSP	250	130,35	50,40	654,30	25	22	260	260	100	M12X50	M10X20	299,30
10 X 1"	M4-110253-200	1" BSPP	250	1" BSPP	250	130,35	50,40	654,30	25	22	260	260	100	M12X50	M10X20	299,30