

Multiports M2-SR5

Media Type
Hydraulic Oil, Air - Vacuum

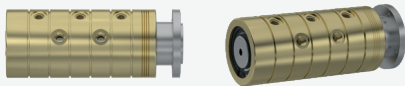
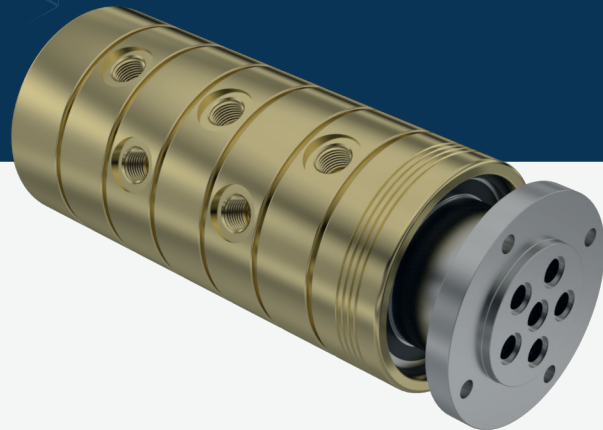
Max. Speed
250 RPM

Max. Pressure
250 BAR

Max. Temperature
80 °C

Connection Type
NPT, BSPP, BSPT

Rotor Size
2 x 1/4" - 12 x 3/4"

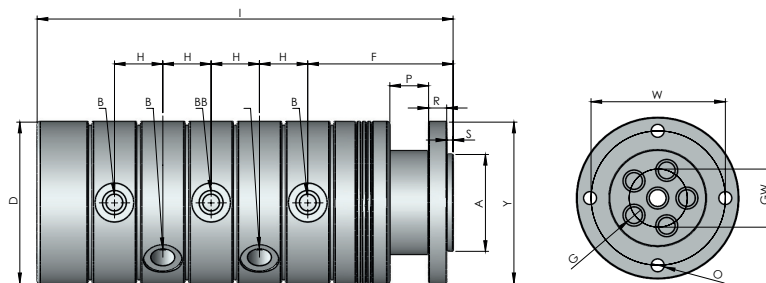


- ✓ Multi flow design
- ✓ Self supported design
- ✓ Dynamic carbon teflon sealing
- ✓ Special design sealing part for different fluids
- ✓ Flanged shaft
- ✓ Chrom plated sealing surface
- ✓ For low-quality fluids
- ✓ Custom connections types are available

Multi-passage rotary unions.

! Do not operate without fluid.

DIMENSIONS



SIZE	MODEL NO	B	Y Ø	A Ø	G Ø	D Ø	F	H	I	S	P	R	W	GW	O	KG
5 X 1/4"	M2-45081-200	1/4" NPT	81	45	7	80	71	23,40	207,70	3	20	7	70	20	6,50	6,85
5 X 1/4"	M2-45082-200	1/4" BSP	81	45	7	80	71	23,40	207,70	3	20	7	70	20	6,50	6,85
5 X 1/4"	M2-45083-200	1/4" BSPP	81	45	7	80	71	23,40	207,70	3	20	7	70	20	6,50	6,85
5 X 3/8"	M2-45101-200	3/8" NPT	108	65	10	108	89	30	259	5	20	12	90	28	9	15,65
5 X 3/8"	M2-45102-200	3/8" BSP	108	65	10	108	89	30	259	5	20	12	90	28	9	15,65
5 X 3/8"	M2-45103-200	3/8" BSPP	108	65	10	108	89	30	259	5	20	12	90	28	9	15,65
5 X 1/2"	M2-45151-200	1/2" NPT	125	75	13	125	112,50	37,40	322	5	30	14	104	45	10	25,45
5 X 1/2"	M2-45152-200	1/2" BSP	125	75	13	125	112,50	37,40	322	5	30	14	104	45	10	25,45
5 X 1/2"	M2-45153-200	1/2" BSPP	125	75	13	125	112,50	37,40	322	5	30	14	104	45	10	25,45
5 X 3/4"	M2-45201-200	3/4" NPT	165	115	18	165	132,50	43,40	373,70	5	45	13	139	60	11	51,50
5 X 3/4"	M2-45202-200	3/4" BSP	165	115	18	165	132,50	43,40	373,70	5	45	13	139	60	11	51,50
5 X 3/4"	M2-45203-200	3/4" BSPP	165	115	18	165	132,50	43,40	373,70	5	45	13	139	60	11	51,50