

Multiports M3-SR2

Media Type
Hydraulic Oil, Air - Vacuum

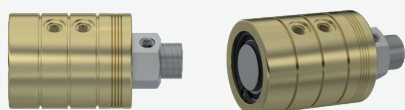
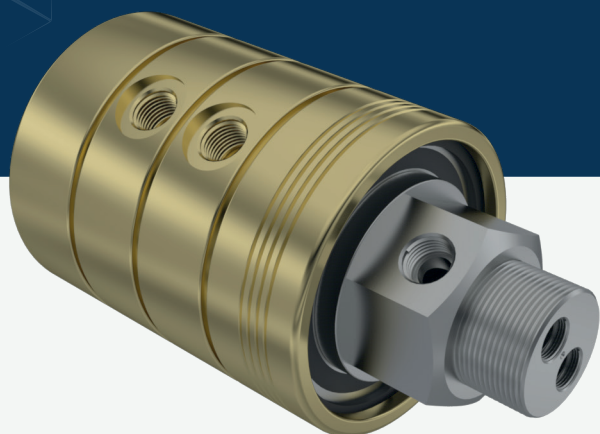
Max. Speed
250 RPM

Max. Pressure
250 BAR

Max. Temperature
80 °C

Connection Type
NPT, BSPP, BSPT

Rotor Size
2 x 1/4" - 12 x 3/4"

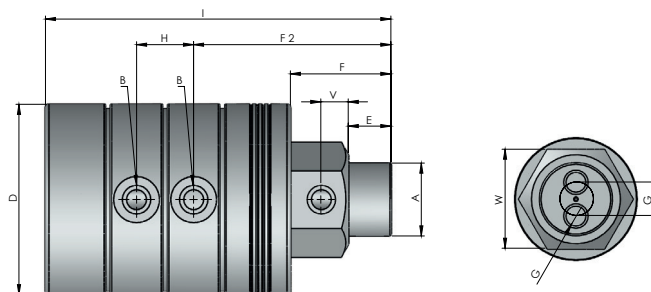


- ✓ Threaded connection
- ✓ Self supported design
- ✓ Dynamic carbon teflon sealing
- ✓ Special design sealing part for different fluids
- ✓ Chrom plated sealing surface
- ✓ Brass body
- ✓ Custom connections types are available

Multi-passage rotary unions.

! Do not operate without fluid.

DIMENSIONS



SIZE	MODEL NO	B	A (RH)	GØ	E	F	DØ	I	F 2	H	V	GWØ	W	KG
2 X 1/4"	M3-42081-2110	1/4" NPT	1" NPT	7	19	57	80	162,50	98	23,4	17	15	46	4,30
2 X 1/4"	M3-42082-2210	1/4" BSP	1" BSP	7	19	57	80	162,50	98	23,4	17	15	46	4,30
2 X 1/4"	M3-42083-2310	1/4" BSPP	1" BSPP	7	19	57	80	162,50	98	23,4	17	15	46	4,30
2 X 1/4"	M3-42081-2112	1/4" NPT	1 1/4" NPT	7	28	66	80	171,50	107	23,4	17	20	55	4,80
2 X 1/4"	M3-42082-2212	1/4" BSP	1 1/4" BSP	7	28	66	80	171,50	107	23,4	17	20	55	4,80
2 X 1/4"	M3-42083-2312	1/4" BSPP	1 1/4" BSPP	7	28	66	80	171,50	107	23,4	17	20	55	4,80
2 X 3/8"	M3-42101-2112	3/8" NPT	1 1/4" NPT	10	28	66	80	190	113	30	17	18	55	5,40
2 X 3/8"	M3-42102-2212	3/8" BSP	1 1/4" BSP	10	28	66	80	190	113	30	17	18	55	5,40
2 X 3/8"	M3-42103-2312	3/8" BSPP	1 1/4" BSPP	10	28	66	80	190	113	30	17	18	55	5,40
2 X 1/2"	M3-42151-2114	1/2" NPT	1 1/2" NPT	13	28	66	125	226,80	129,50	37,40	18	22	65	15,30
2 X 1/2"	M3-42152-2214	1/2" BSP	1 1/2" BSP	13	28	66	125	226,80	129,50	37,40	18	22	65	15,30
2 X 1/2"	M3-42153-2314	1/2" BSPP	1 1/2" BSPP	13	28	66	125	226,80	129,50	37,40	18	22	65	15,30
2 X 3/4"	M3-42201-2116	3/4" NPT	2" NPT	18	30	90	135	261,80	155,50	43,40	25	27	70	19,80
2 X 3/4"	M3-42202-2216	3/4" BSP	2" BSP	18	30	90	135	261,80	155,50	43,40	25	27	70	19,80
2 X 3/4"	M3-42203-2316	3/4" BSPP	2" BSPP	18	30	90	135	261,80	155,50	43,40	25	27	70	19,80