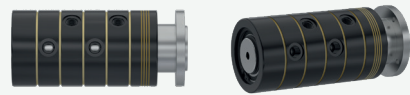
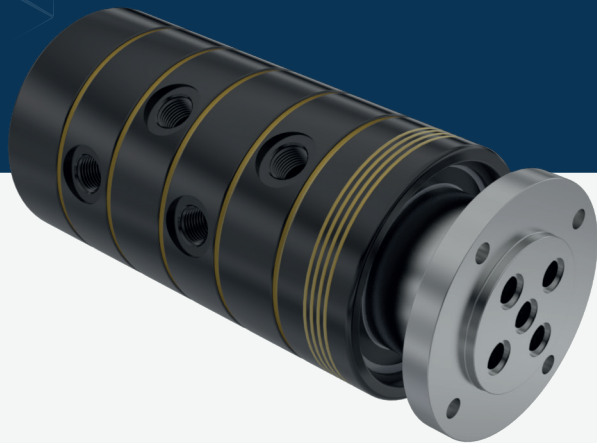


Multiports M2-C4



Multi-passage rotary unions.

Media Type
Hydraulic Oil, Air - Vacuum

Max. Speed
250 RPM

Max. Pressure
250 BAR

Max. Temperature
80 °C

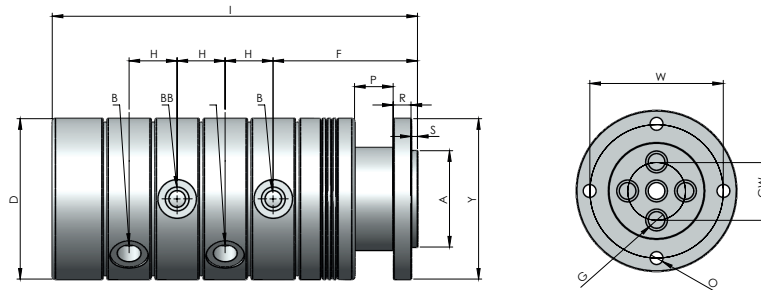
Connection Type
NPT, BSPP, BSPT

Rotor Size
2 x 1/4" - 12 x 3/4"

- Multi flow design
- Self supported sealing
- Dynamic carbon teflon sealing
- Special design sealing part for different fluids
- Flanged shaft
- Chrom plated sealing surface
- Carbon steel body
- Anti corrosion plated body
- Custom connections types are available

Do not operate without fluid.

DIMENSIONS



SIZE	MODEL NO	B	Y Ø	A Ø	G Ø	D Ø	F	H	I	S	P	R	W	GW	O	KG
4 X 1/4"	M2-14081-200	1/4" NPT	81	45	7	80	71	23,40	184,30	3	20	7	70	20	6,50	5,40
4 X 1/4"	M2-14082-200	1/4" BSP	81	45	7	80	71	23,40	184,30	3	20	7	70	20	6,50	5,40
4 X 1/4"	M2-14083-200	1/4" BSPP	81	45	7	80	71	23,40	184,30	3	20	7	70	20	6,50	5,40
4 X 3/8"	M2-14101-200	3/8" NPT	98	50	10	98	87,20	30	227,50	5	20	12	76	24	8,50	10
4 X 3/8"	M2-14102-200	3/8" BSP	98	50	10	98	87,20	30	227,50	5	20	12	76	24	8,50	10
4 X 3/8"	M2-14103-200	3/8" BSPP	98	50	10	98	87,20	30	227,50	5	20	12	76	24	8,50	10
4 X 1/2"	M2-14151-200	1/2" NPT	125	75	13	125	112,50	37,40	284,60	5	30	14	104	45	10	20,40
4 X 1/2"	M2-14152-200	1/2" BSP	125	75	13	125	112,50	37,40	284,60	5	30	14	104	45	10	20,40
4 X 1/2"	M2-14153-200	1/2" BSPP	125	75	13	125	112,50	37,40	284,60	5	30	14	104	45	10	20,40
4 X 3/4"	M2-14201-200	3/4" NPT	135	85	18	135	117,50	43,40	310,60	5	35	12	110	46	11	25,50
4 X 3/4"	M2-14202-200	3/4" BSP	135	85	18	135	117,50	43,40	310,60	5	35	12	110	46	11	25,50
4 X 3/4"	M2-14203-200	3/4" BSPP	135	85	18	135	117,50	43,40	310,60	5	35	12	110	46	11	25,50
3 X 1"	M2-14251-200	1" NPT	164	100	22	164	152,50	50,40	376	7	55	16	138	55	13,50	45,30
3 X 1"	M2-14252-200	1" BSP	164	100	22	164	152,50	50,40	376	7	55	16	138	55	13,50	45,30

3 X 1"	M2-14253-200	1" BSPP	164	100	22	164	152,50	50,40	376	7	55	16	138	55	13,50	45,30
4 X 1 1/4"	M2-14321-200	1 1/4" NPT	230	150	28	230	167,10	65	447,50	7	55	20	180	85	13,50	110,50
4 X 1 1/4"	M2-14322-200	1 1/4" BSP	230	150	28	230	167,10	65	447,50	7	55	20	180	85	13,50	110,50
4 X 1 1/4"	M2-14323-200	1 1/4" BSPP	230	150	28	230	167,10	65	447,50	7	55	20	180	85	13,50	110,50
4 X 1 1/2"	M2-14401-200	1 1/2" NPT	258	190	38	80	198,40	78,40	547	10	55	20	220	105	15,50	170
4 X 1 1/2"	M2-14402-200	1 1/2" BSP	258	190	38	80	198,40	78,40	547	10	55	20	220	105	15,50	170
4 X 1 1/2"	M2-14403-200	1 1/2" BSPP	258	190	38	80	198,40	78,40	547	10	55	20	220	105	15,50	170